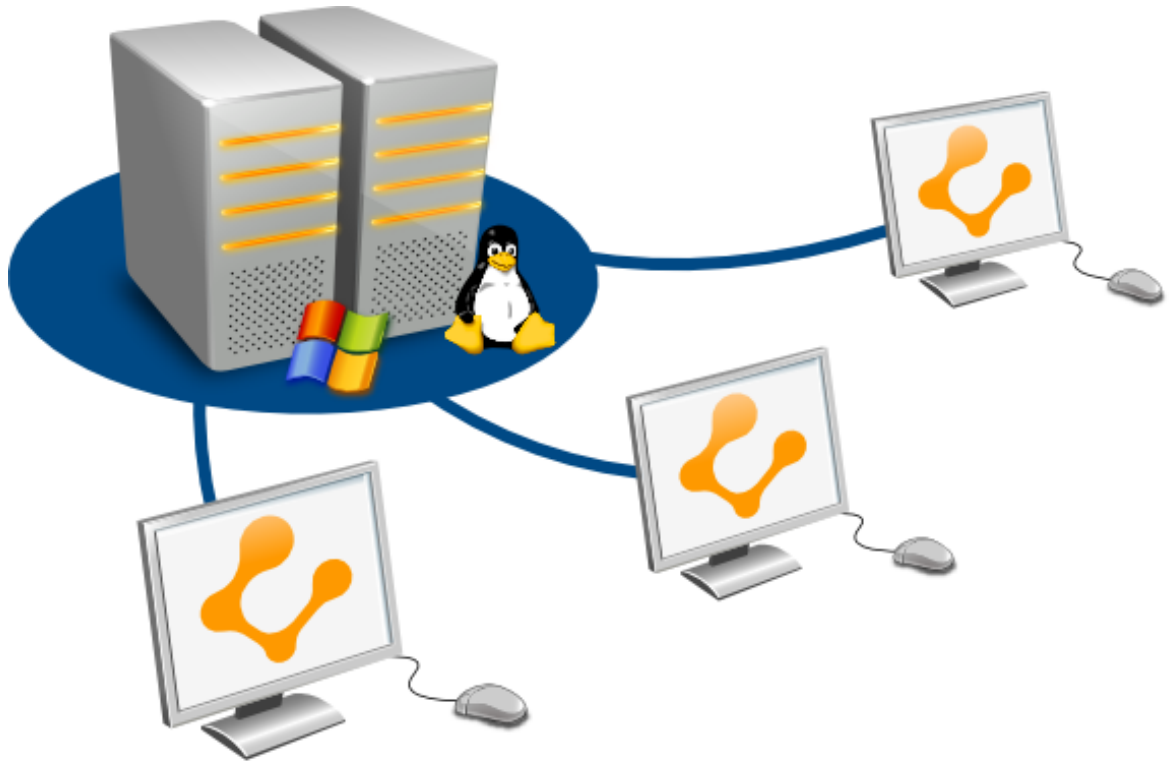


# Ulteo Open Virtual Desktop

## Installation from the DVD-ROM

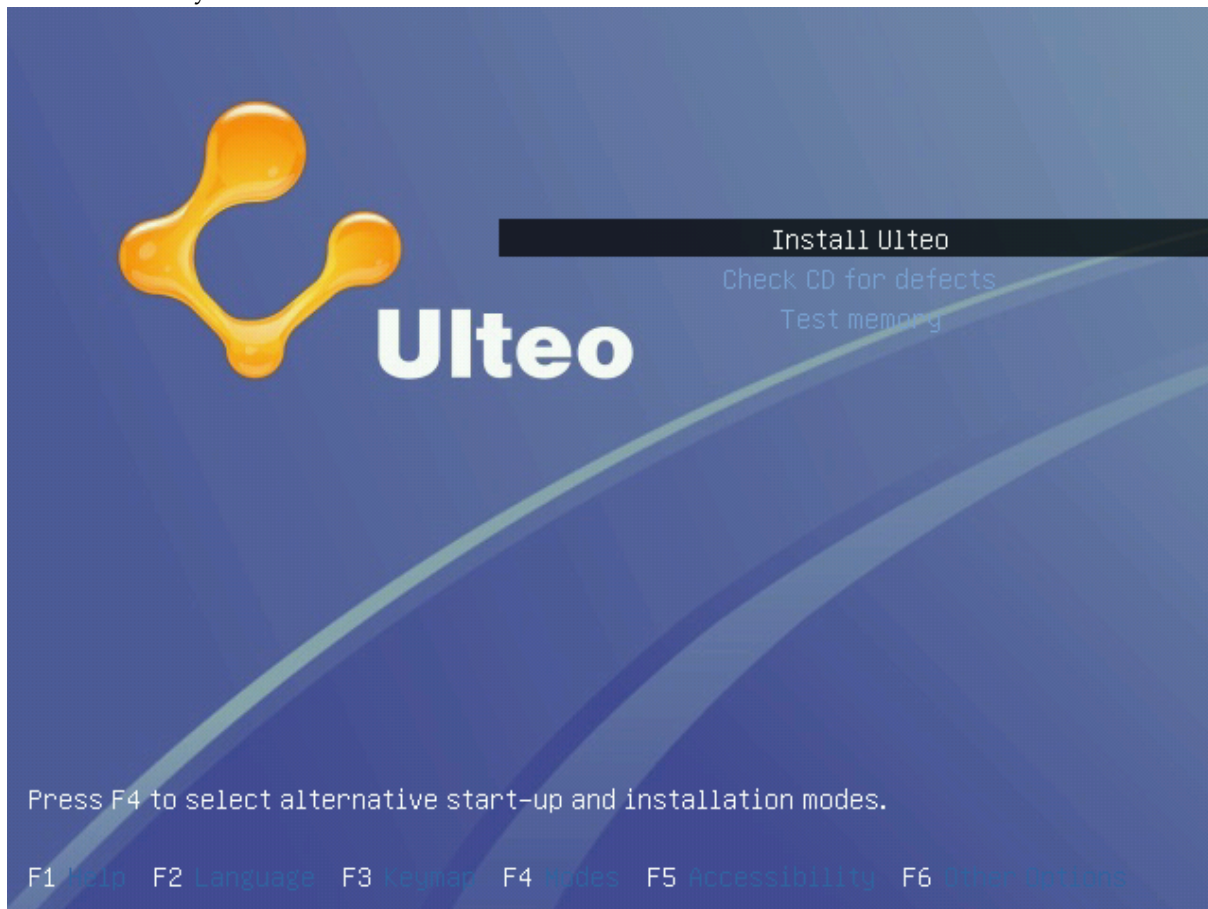


## Contents

<b>1</b>	<b>Installation</b>	<b>2</b>
<b>2</b>	<b>First boot: find the IP address</b>	<b>12</b>
<b>3</b>	<b>Configure your Application Server</b>	<b>13</b>
3.1	Register the server . . . . .	14
3.2	Set a redirection name . . . . .	15
<b>4</b>	<b>Perform a "Publication"</b>	<b>15</b>
<b>5</b>	<b>Launch a session</b>	<b>17</b>

If you haven't yet an Ulteo OVD DVD-ROM, please download the corresponding ISO file from [this place at www.ulteo.com](http://www.ulteo.com) and burn it to a fresh DVD.

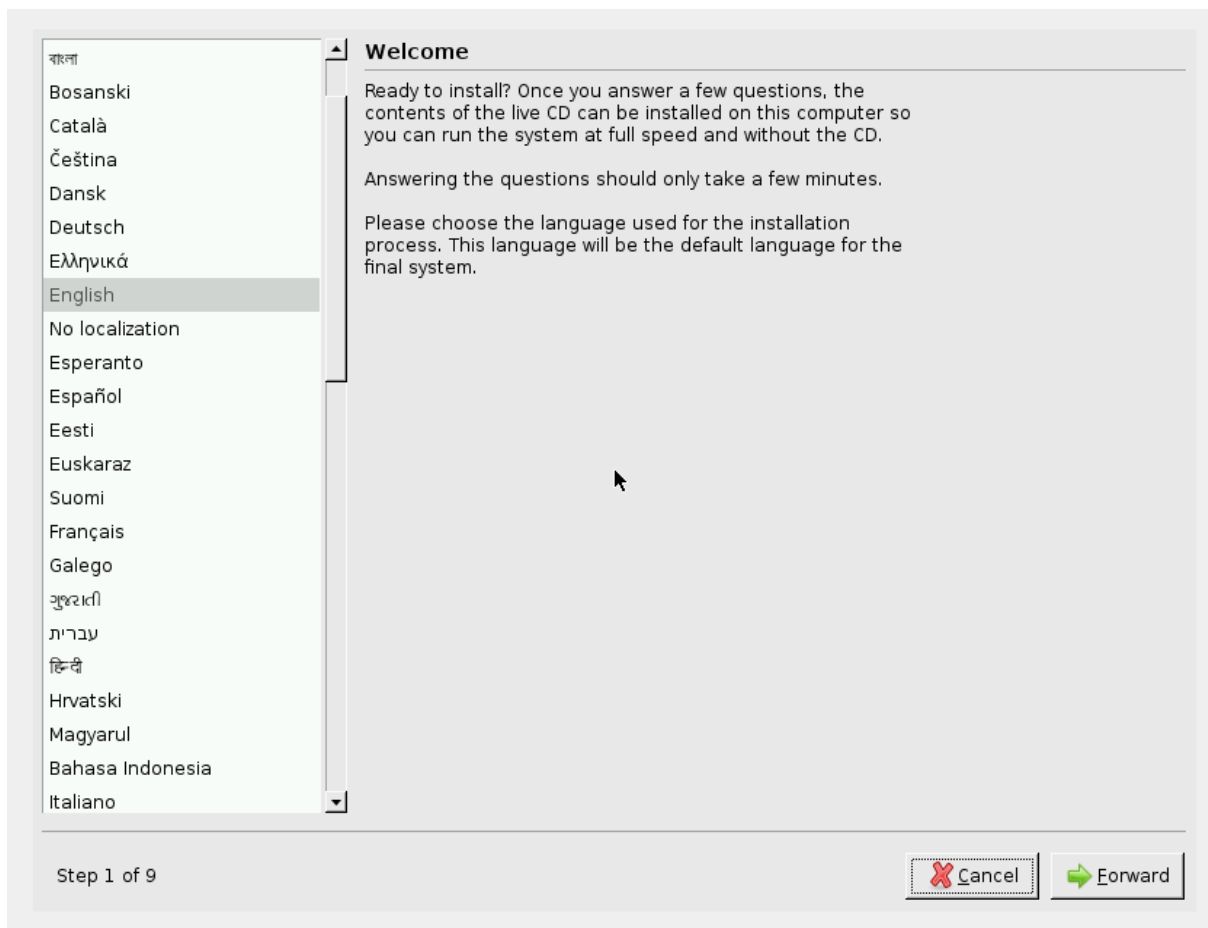
Insert the Ulteo OVD DVD-ROM into your computer and restart it. If you selected the DVD-ROM as first boot device you'll see the bootloader interface:



## 1 Installation

Press *Enter*, the system is now going to boot. It may take some time.

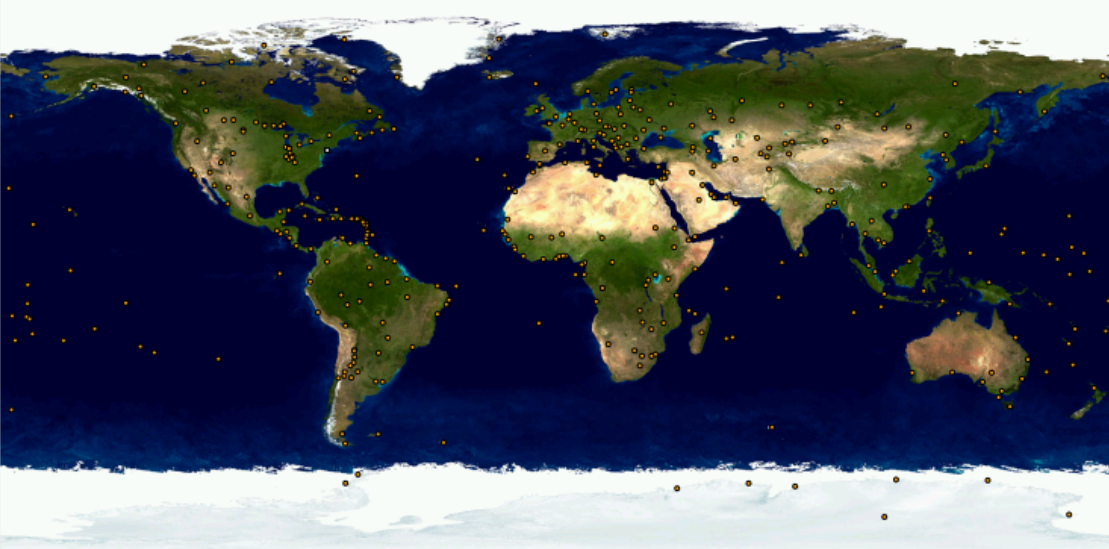
- The first step is used to select the system language. Choose your language from the list and click on *Forward*.



- In the second step, the system asks you to define your location. Either select a point on the map or choose one from the *Selected city* form and click on *Forward*.

**Where are you?**

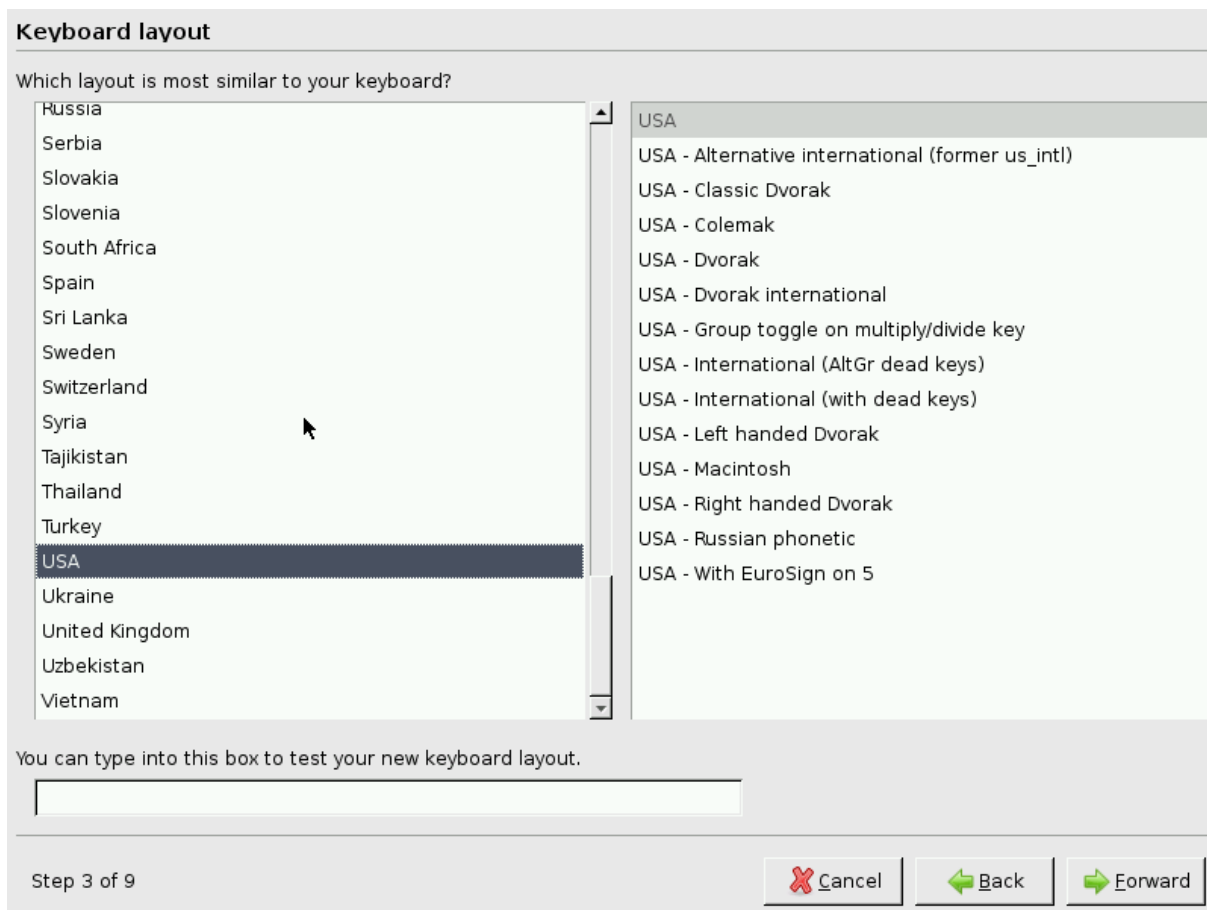
Select a city in your country and time zone. If the indicated current time is incorrect even after selecting the correct time zone, you can adjust it after rebooting into the installed system.



Selected city:  Selected region: United States  
Time zone: EST (GMT-5:00) Current time: 08:43:26 AM

Step 2 of 9

- The third step is used to define the keyboard layout. Select yours and click on *Forward*.



- Then, you have to select the partitioning method. We suggest the automatic method: *Guided - use entire disk*.



- These questions are about the installed operating system itself, user login and password used to access the OS, along with the hostname of the machine.

**Who are you?**

What is your name?

What name do you want to use to log in?  
  
*If more than one person will use this computer, you can set up multiple accounts after installation.*

Choose a password to keep your account safe.  
   
*Enter the same password twice, so that it can be checked for typing errors.*

What is the name of this computer?  
  
*This name will be used if you make the computer visible to others on a network.*

---

Step 5 of 9

- This question is about the Ulteo OVD installation mode. This documentation only support the both mode (Application Server and Session Manager checked)



**Installation Type**

Which OVD components do you want to install?

Session Manager

Application Server

Step 6 of 9

- Type a password and confirm it

**Ulteo OVD Session Manager Configuration**

Administrator username

Administrator password

Verify the administrator password

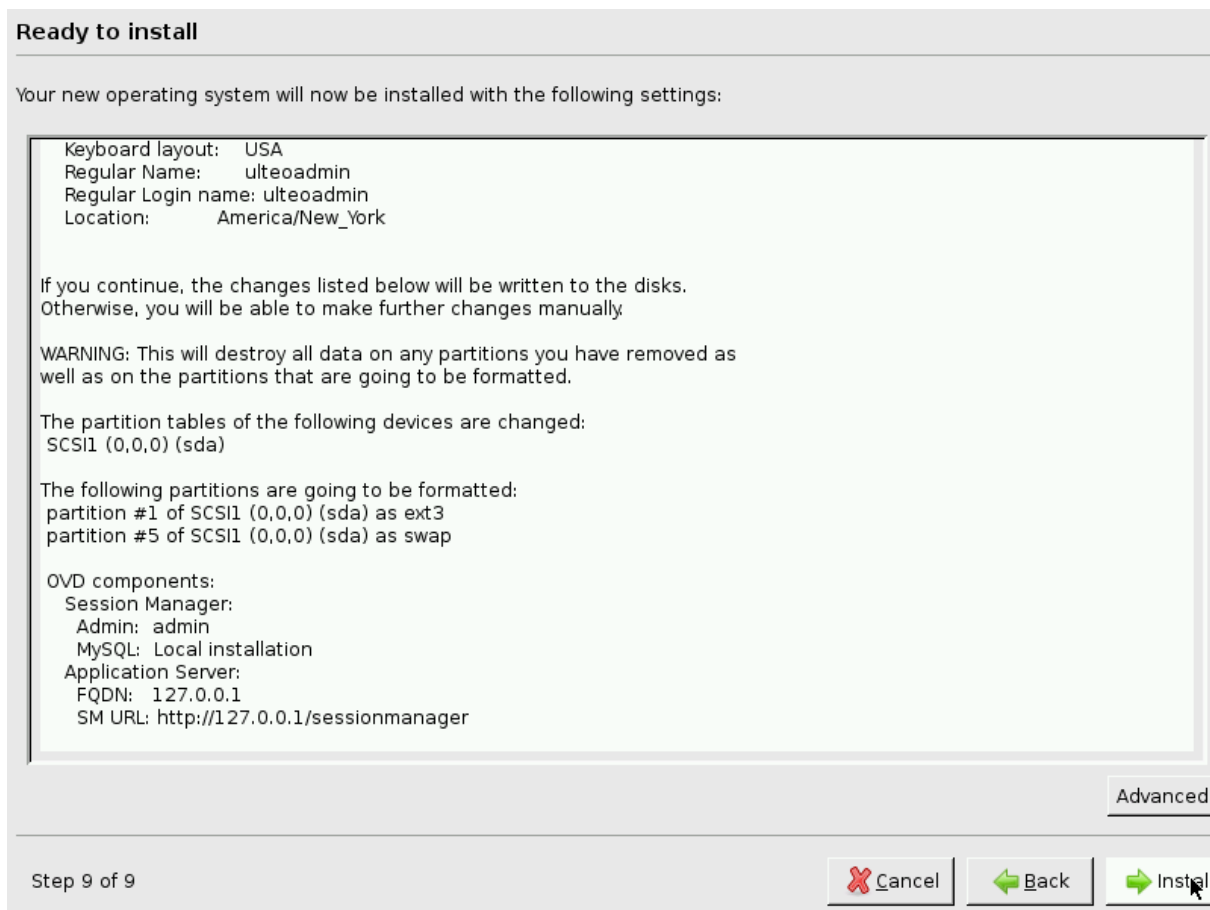
MySQL settings

Local  
With this option a MySQL server will be installed and configured automatically using the administrator credentials.

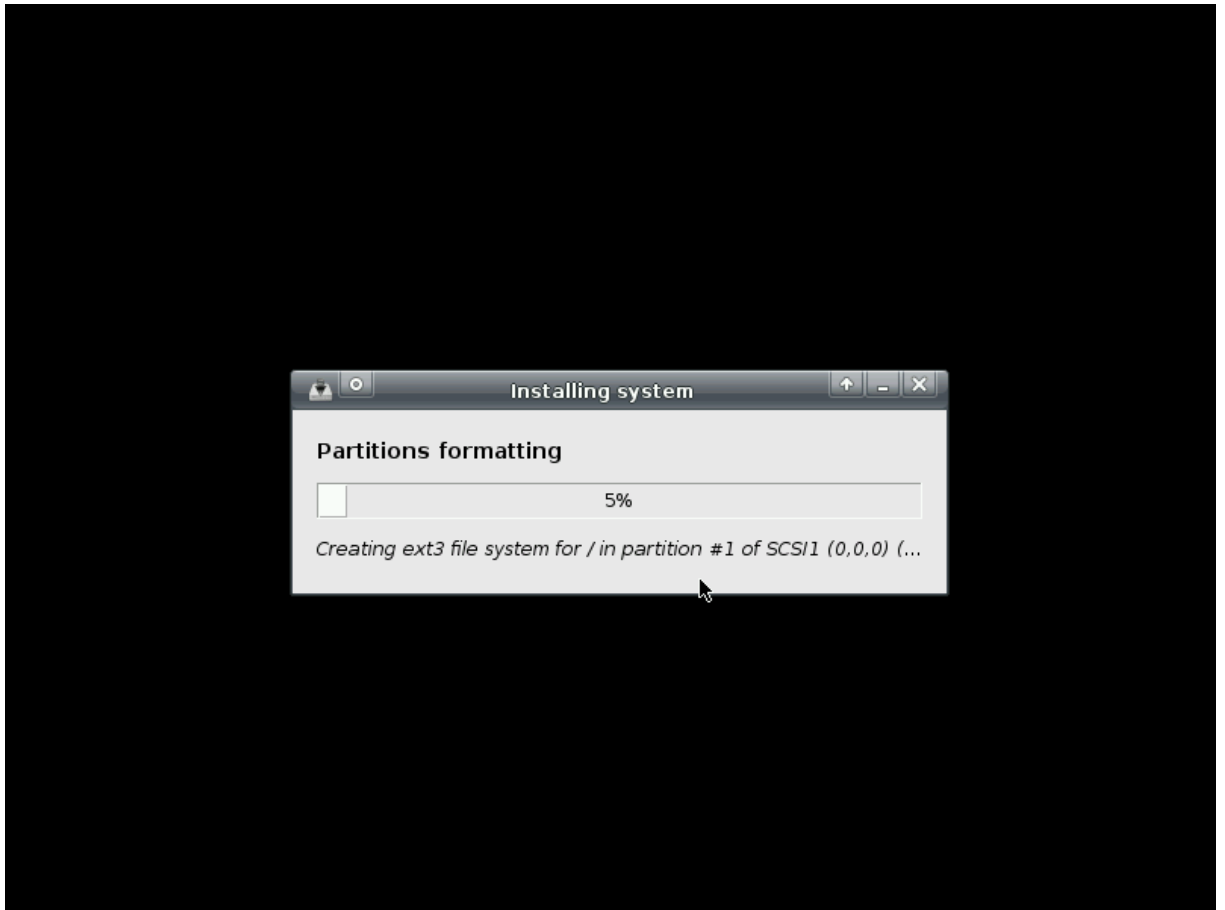
Remote  
Install OVD using an already installed MySQL server. The user should be able to access an modify an already created database.

Step 7 of 9

- Now now carefully the installation summary.  
Click on *Install*.



- Now, you just have to wait during the system installation.



- Finally, click on *Restart now*.



## 2 First boot: find the IP address

Ulteo OVD is mainly a network service, so it is useful to know the network IP address of this machine to access it from the network, for instance with a web browser.

First of all, you have to log into the system, and use the username and password you specified at [install time](#).

```
* Starting kernel log daemon... [ OK ]
* Starting OpenBSD Secure Shell server sshd [ OK ]
* Starting MySQL database server mysqld [ OK ]
* Checking for corrupt, not cleanly closed and upgrade needing tables.
* Starting deferred execution scheduler atd [ OK ]
* Starting periodic command scheduler crond [ OK ]
* Starting web server apache2
apache2: Could not reliably determine the server's fully qualified domain name,
using 127.0.1.1 for ServerName [ OK ]
* Starting Ulteo DVD daemon
* Starting ulteo-ovd daemon...
* Starting OpenBSD Secure Shell server sshd [ OK ]
* Starting portmap daemon... [ OK ]
* Starting system message bus dbus [ OK ]
* Starting periodic command scheduler crond [ OK ]
* Starting Common Unix Printing System: cupsd [ OK ]
* Running local boot scripts (/etc/rc.local) [ OK ]

Ulteo OVD 2.0 ulteo-ovd tty1
ulteo-ovd login: ulteoadmin
Password: _
```

On an active terminal command line type the following command:

```
$ ifconfig eth0
```

Following is a possible output:

```
$ ifconfig eth0
eth0      Link encap:Ethernet  HWaddr 00:30:05:5c:73:a5
inet addr:192.168.0.180  Bcast:192.168.0.255  Mask:255.255.255.0
UP BROADCAST RUNNING MULTICAST  MTU:1500  Metric:1
RX packets:876143 errors:0 dropped:0 overruns:0 frame:0
TX packets:1053723 errors:0 dropped:0 overruns:0 carrier:0
collisions:0 txqueuelen:100
RX bytes:205179680 (195.6 MiB)  TX bytes:573401350 (546.8 MiB)
```

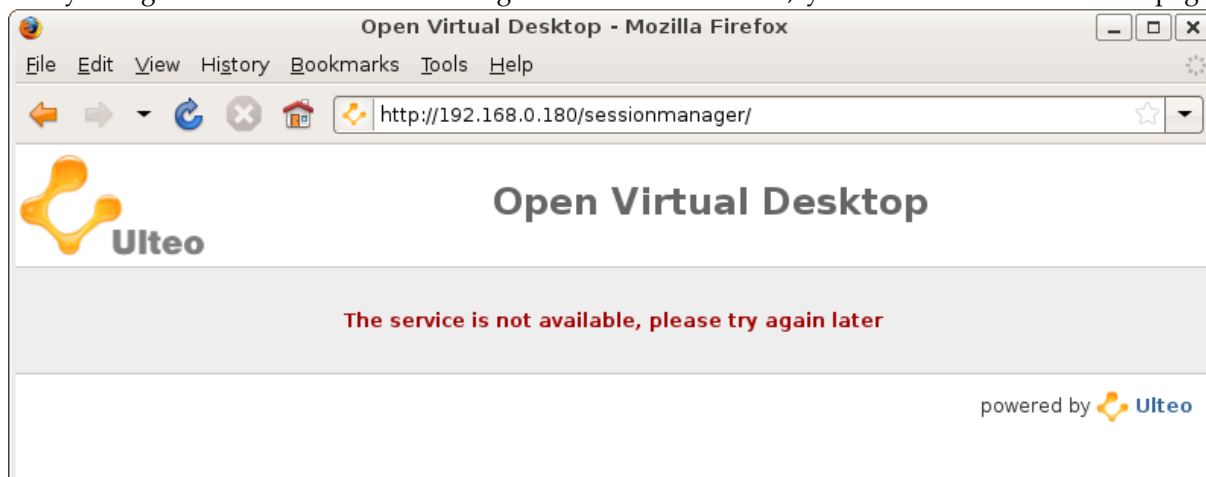
The IP address we are looking for is **192.168.0.180**.

#### IMPORTANT



From now on the Session Manager url we are going to use is **<http://192.168.0.180/sessionmanager>** and you can access the administrator console from: **<http://192.168.0.180/sessionmanager/admin>**

By using a web browser and entering the correct IP address, you should see this kind of page:



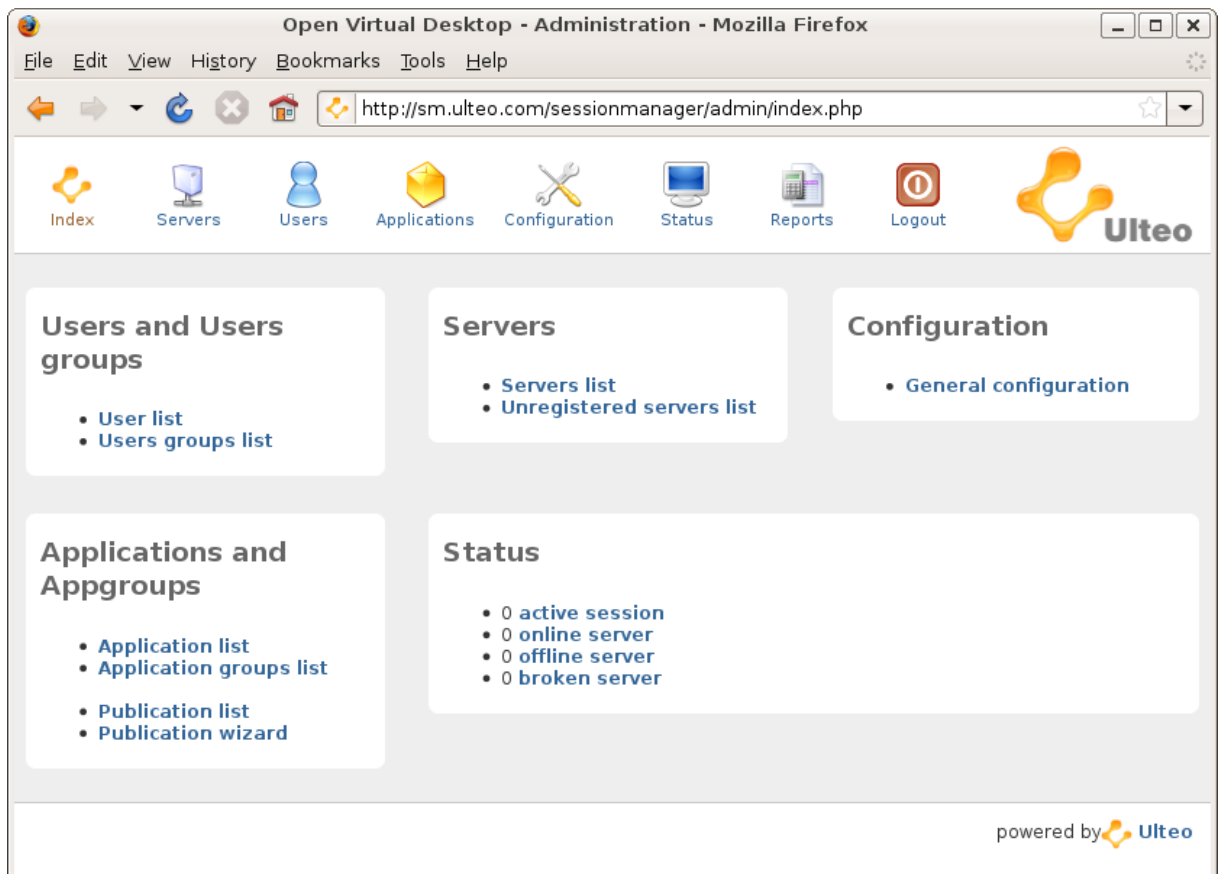
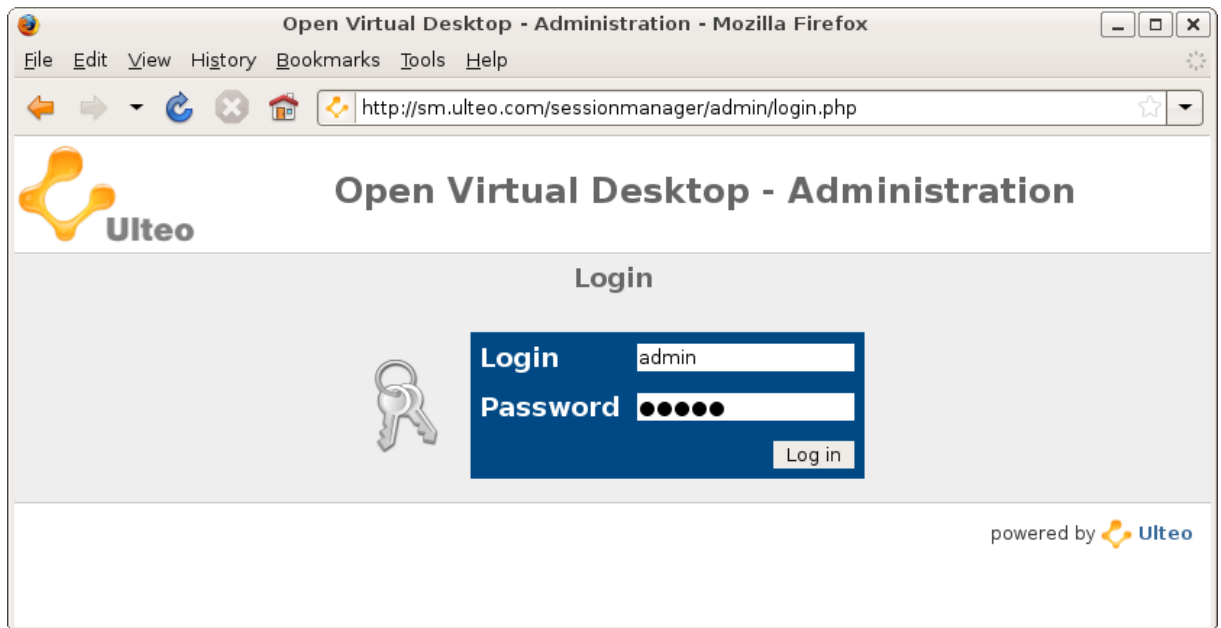
## 3 Configure your Application Server

Once you can access the Ulteo system from your browser, go to the administration console: <http://192.168.0.180/sessionmanager/admin> and authenticate yourself.

#### IMPORTANT

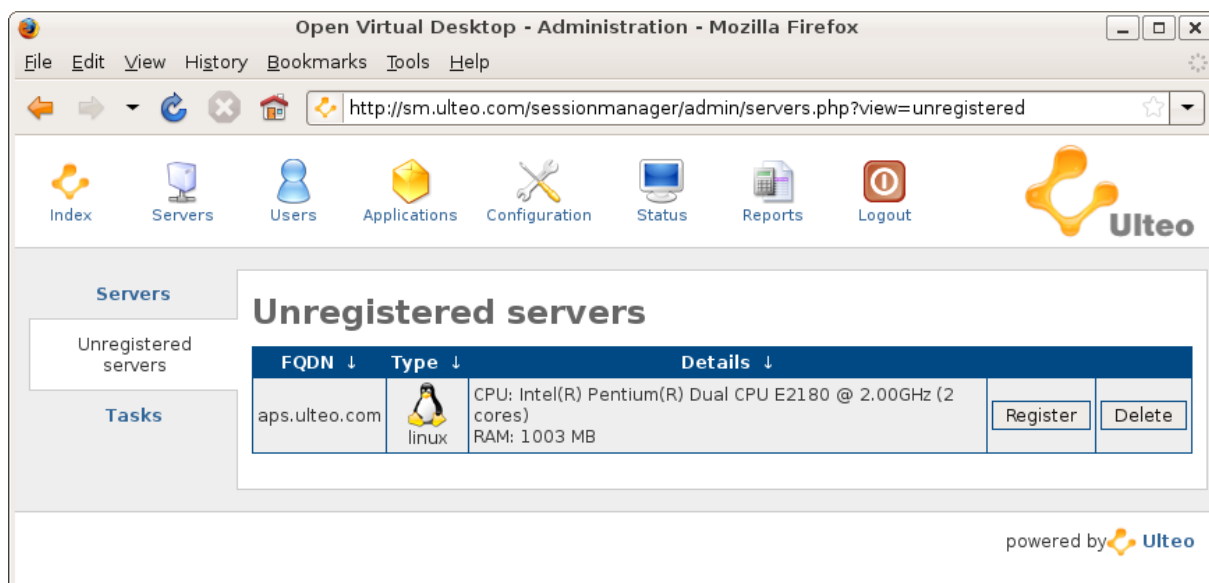


The administrator login and password are both **admin**.



### 3.1 Register the server

- Your Ulteo Applications Server (ApS) should show up in the **Unregistered servers** page.

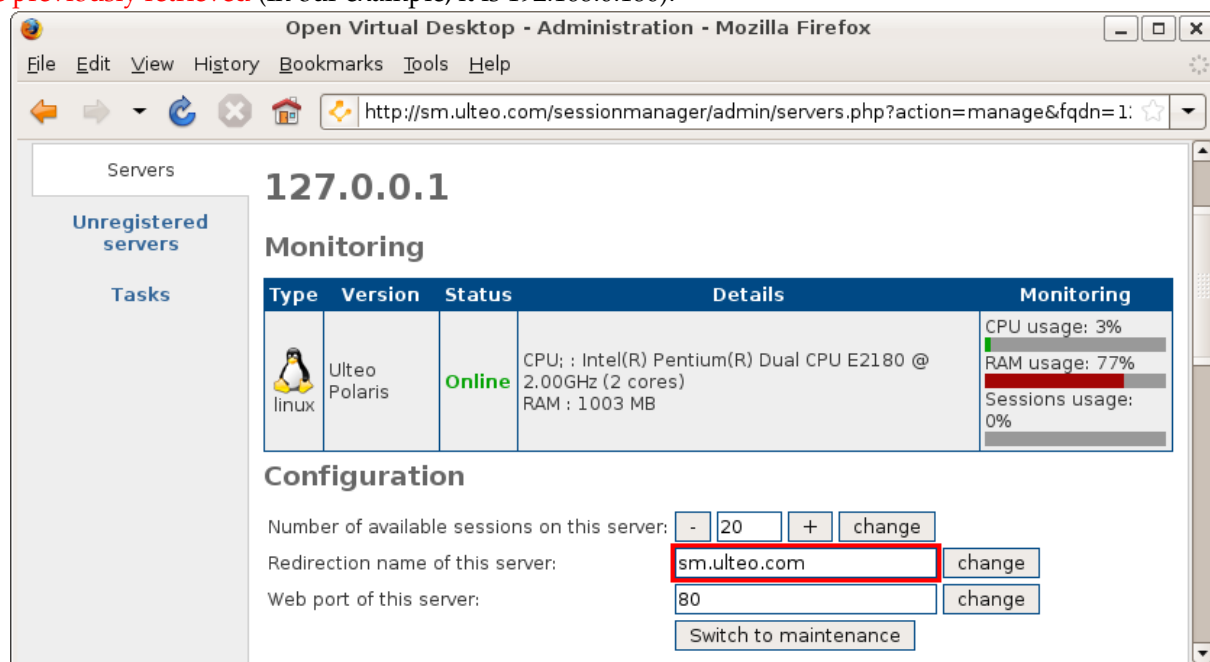


Click on *register*.

- Then, click on *Switch to production* to switch it to Production mode.

### 3.2 Set a redirection name

Your Application Server has **localhost** as server name so you **have to** replace it with **the network address we previously retrieved** (In our example, it is 192.168.0.180).



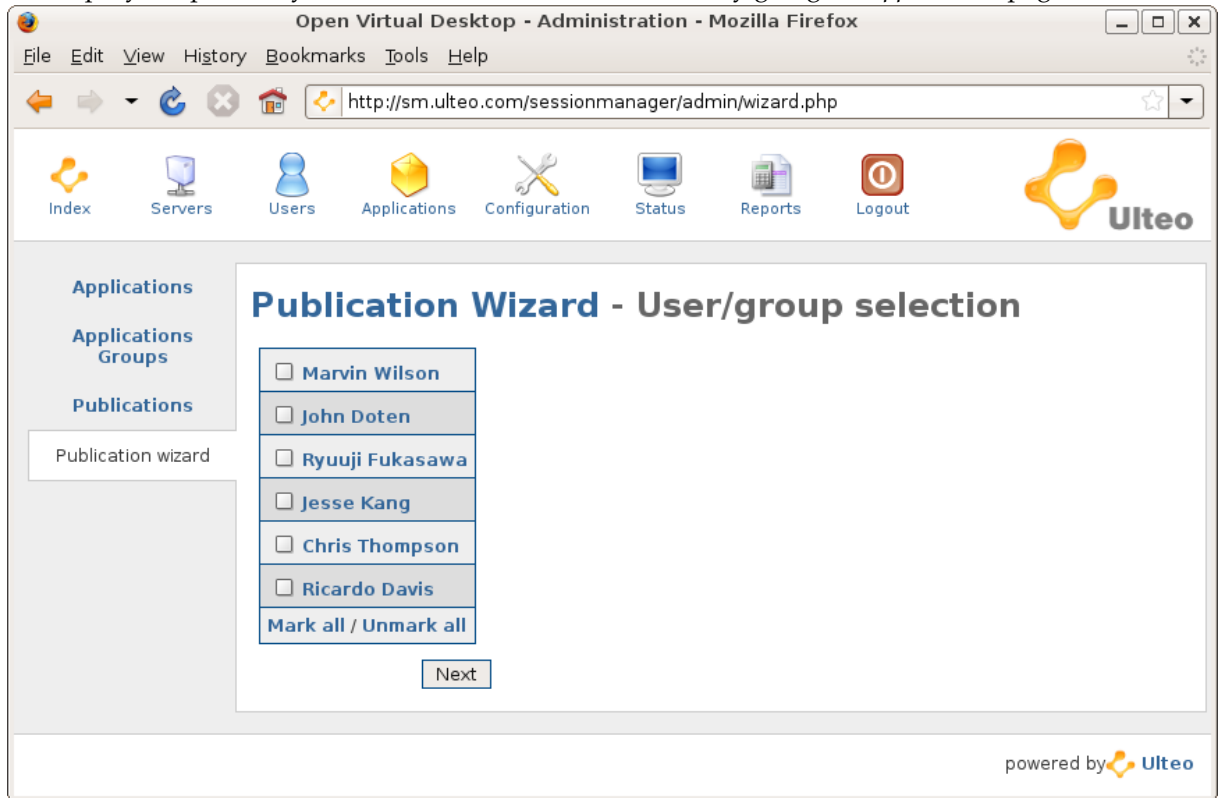
The **redirection name** is used to launch session. When you launch a session, you are redirected to an Application server using the redirection name as redirection. In some cases the default redirection name (the FQDN you gave at the ApS installation) is not valid. For instance, if you setup an private IP address and you want to connect from Internet.

## 4 Perform a "Publication"

A publication is an association between a users group and an applications group. It's an authorization for a users group to launch the applications include in the group.

By default, there is no users or applications group installed so you have to create it to launch sessions (it's not possible to launch session without application in the default configuration).

To simplify the process, you can use the **Publication wizard** by going on *Applications* page.



Go to the Publications page, select and follow the *wizard* steps.

## 5 Launch a session

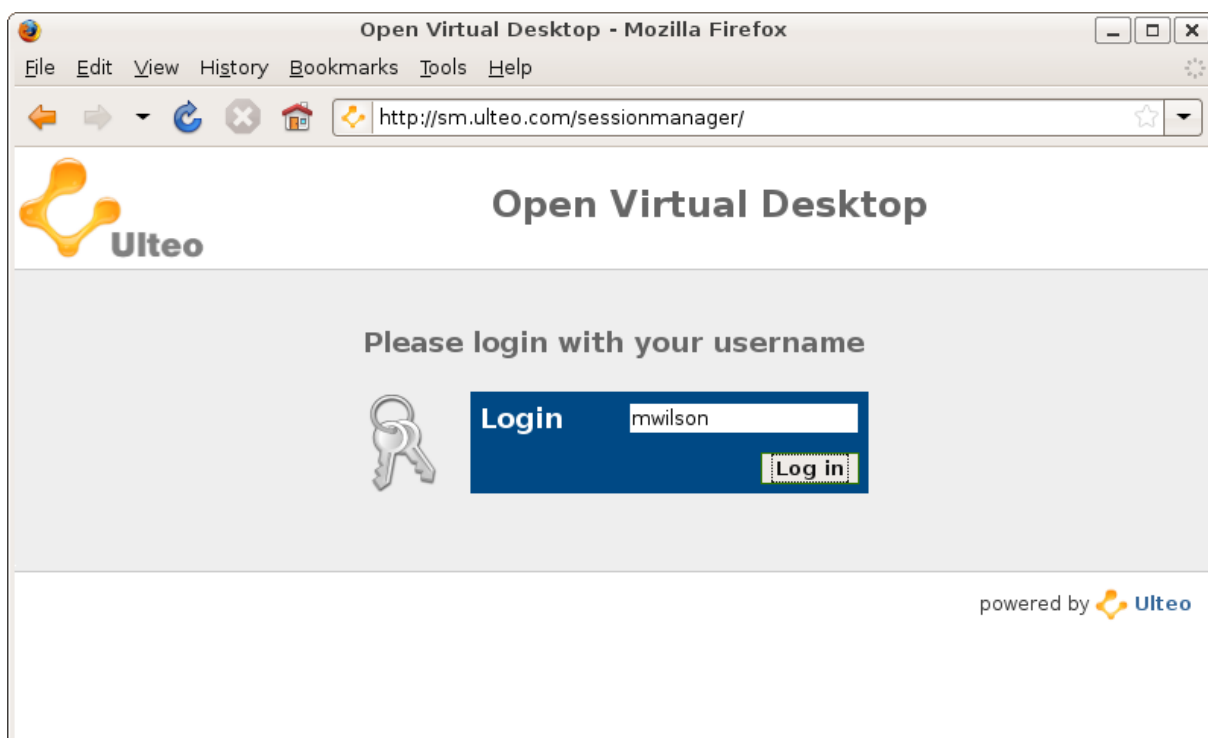
### IMPORTANT

Client prerequisites:

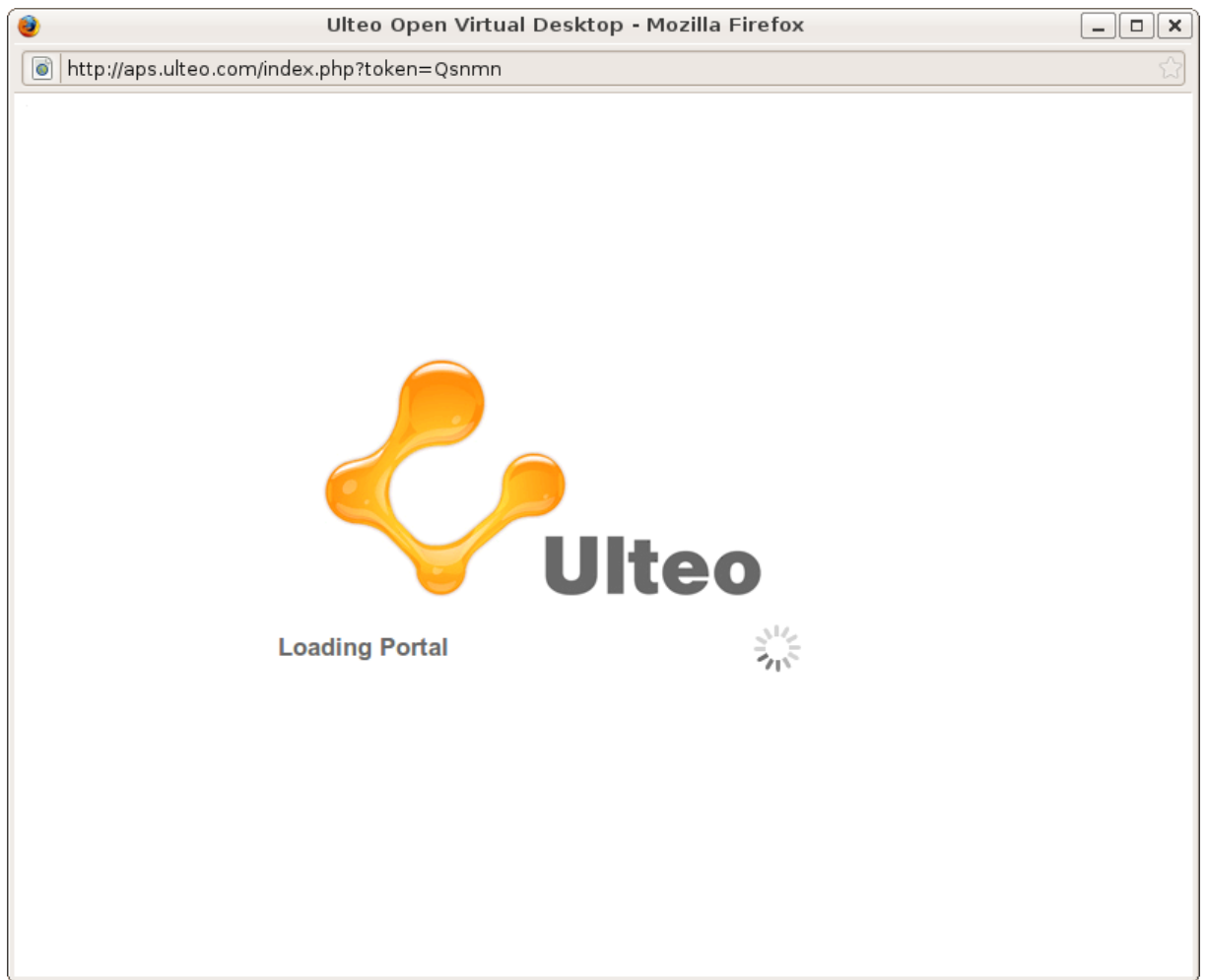


- Java 1.5/1.6 (Sun or OpenJDK)
- browser: Firefox 2+ or Internet Explorer 7+

- Back to <http://sm.ulteo.com/sessionmanager/> with your browser, you should see a login page:



- Once logged in, the session is launching:



- The session is launched and is ready to use with applications that have been published for the user:

