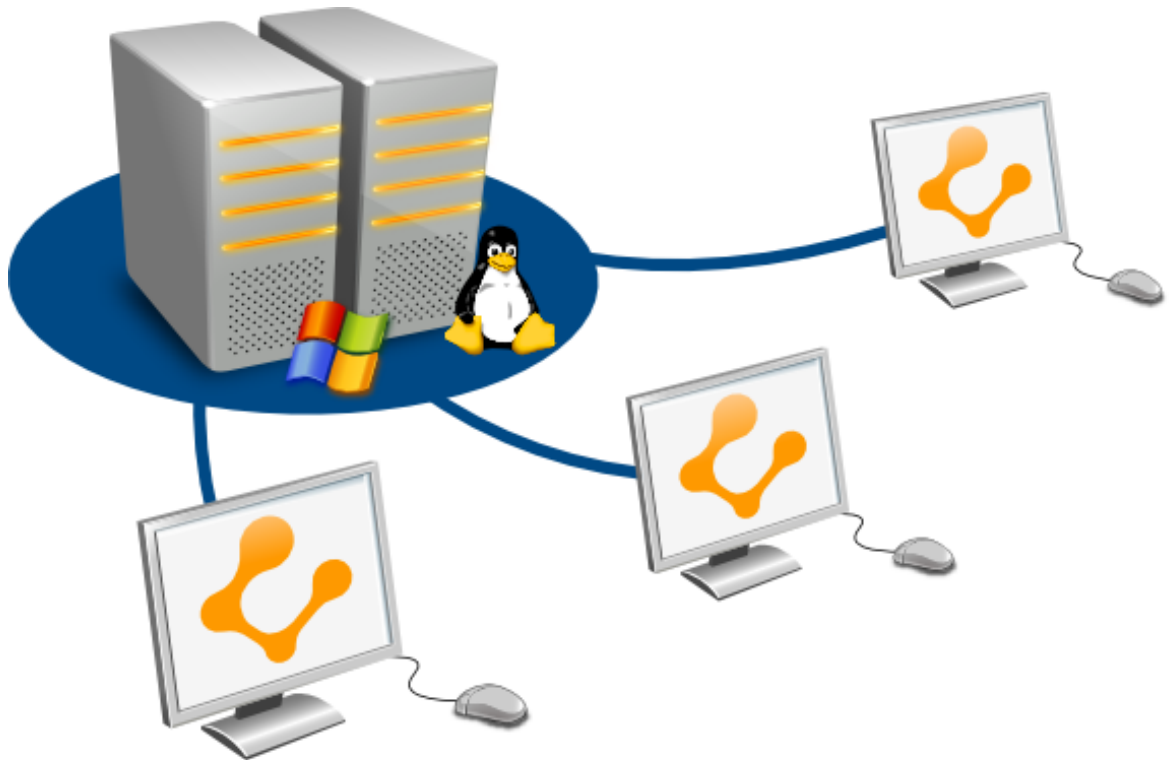


Ulteo Open Virtual Desktop

Microsoft Windows Applications



Contents

1 Prerequisites	2
2 Installation of the Windows™ agent	2
2.1 Session Manager side	3
3 Register the server and publish some applications	4
4 Launch a session	4
5 Internal System	5
5.1 Have a look at the Windows™ agent log	5
5.2 Automaticaly start the service at boot	6

This documentation describes how to use Windows™ applications on an existing and running *Ulteo Open Virtual Desktop*.

This documentation **does not describe** the Open Virtual Desktop installation or configuration. For that, please read the **Installation documentation**.

1 Prerequisites

To use Windows™ applications, you need to plug your Session Manager to a Microsoft® Domain Controller (Active Directory).

You also need to have at least one **Microsoft® Windows™ Server 2003 or 2008™** system with **Terminal services™** installed and configured.

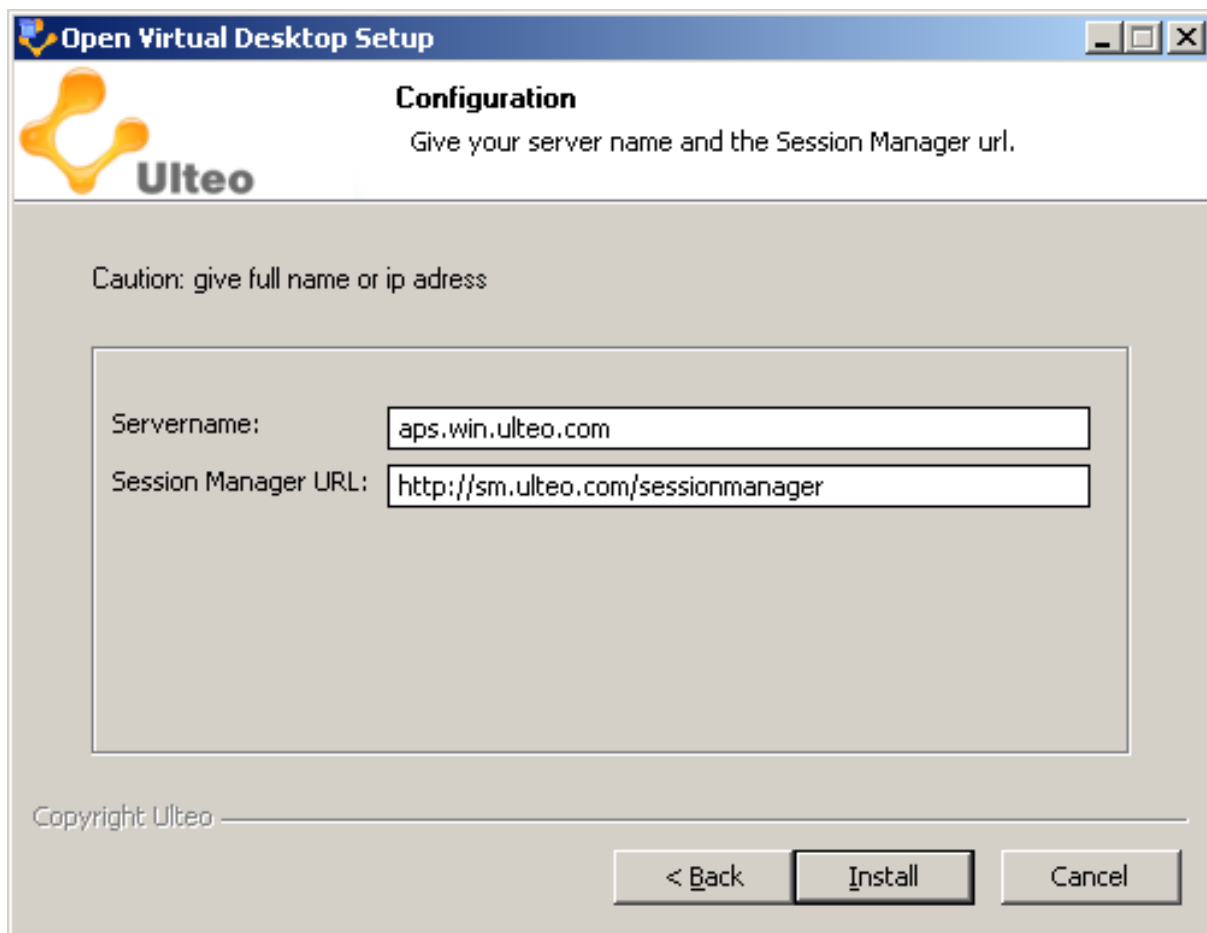
The Windows™ Server machines have to be plugged to the same domain controller as the Session Manager. To plug a Session Manager to a Microsoft Active® Directory, please refer to the *Administration Console* documentation.

2 Installation of the Windows™ agent

Download the Ulteo Open Virtual Desktop Windows™ agent setup software from [this place at www.ulteo.com](http://www.ulteo.com) on your Windows™ machine and execute it.



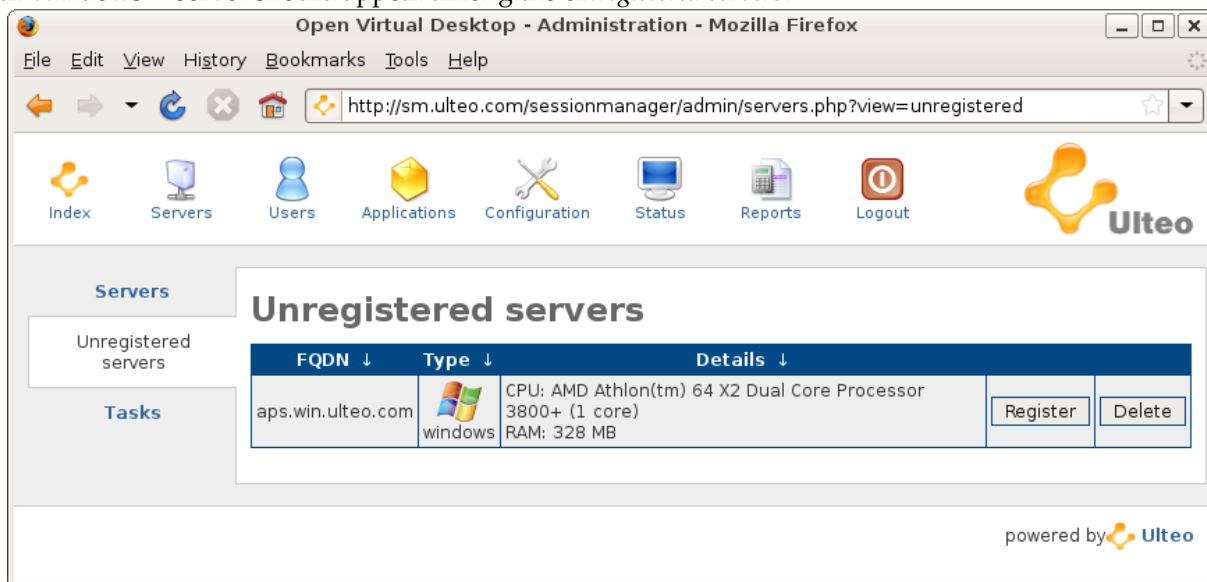
In the configuration frame, you have to set the Windows™ server name. To get the Windows™ FQDN, go to *Start*, then right-click on *My Computer: Properties*. In the *Computer Name* tab, the FQDN is displayed as **Full computer name**.



Finish the installation. The Windows™ agent should be configured and running.

2.1 Session Manager side

Your Windows™ server should appear among the *Unregistered servers*.



If your server does not show up in the list, you might have a DNS configuration issue, or the Windows™ agent has a bug. Please refer to Section 5.

3 Register the server and publish some applications

First, register your Windows™ server and switch it from "maintenance" to "production" mode. You should be able to list applications that are installed on your Windows™ server.

The screenshot shows the administration interface for a Windows server. The main monitoring table is as follows:

Type	Version	Status	Details	Monitoring
Windows	Microsoft Windows Server 2003 for Small Business Server	Online	CPU; : AMD Athlon(tm) 64 X2 Dual Core Processor 3800+ (1 core) RAM : 328 MB	CPU usage: 26% RAM usage: 47% Sessions usage: 0%

The configuration section includes the following settings:

- Number of available sessions on this server: 20
- Redirection name of this server: aps.win.ulteo.com
- Web port of this server: 8082

Available applications on the server:

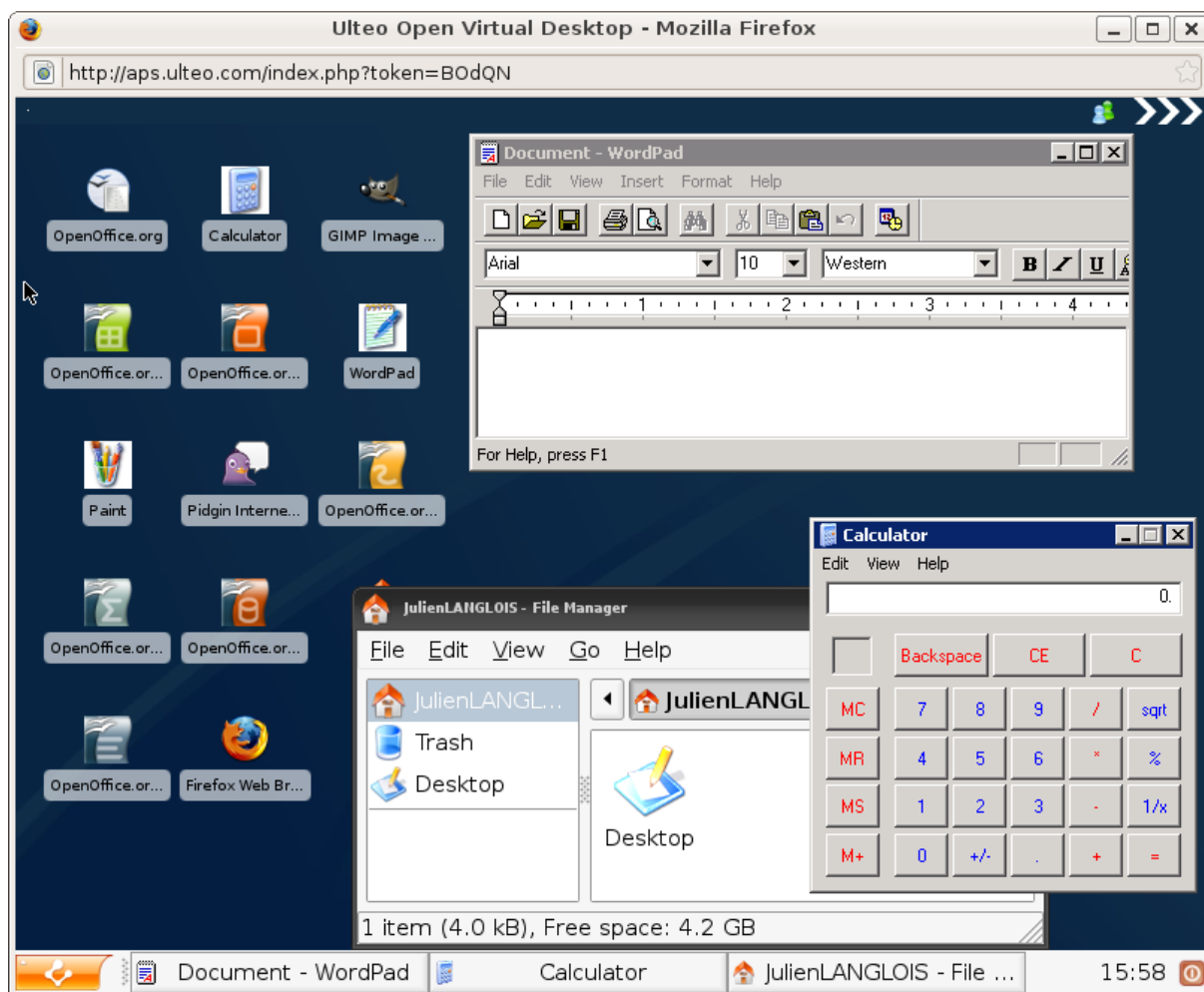
- WordPad
- Calculator
- Paint
- Network Connections

The next step is to add some Windows™ applications to an existing Application Group so that users get authorized to run those your Windows™ applications. If you don't have an existing application group please refer to the Ulteo Open Virtual Desktop **Installation documentation** first.

Now you just have to perform a Windows™ application publication as you probably did previously with Linux applications. To have a global view of which user has access to which applications, you can browse the **Summary** page from the *Status* menu.

4 Lauch a session

If you launch a session, you should be able to access to your Windows™ applications from the application menu and from desktop icons if you enabled that option in the administration console.

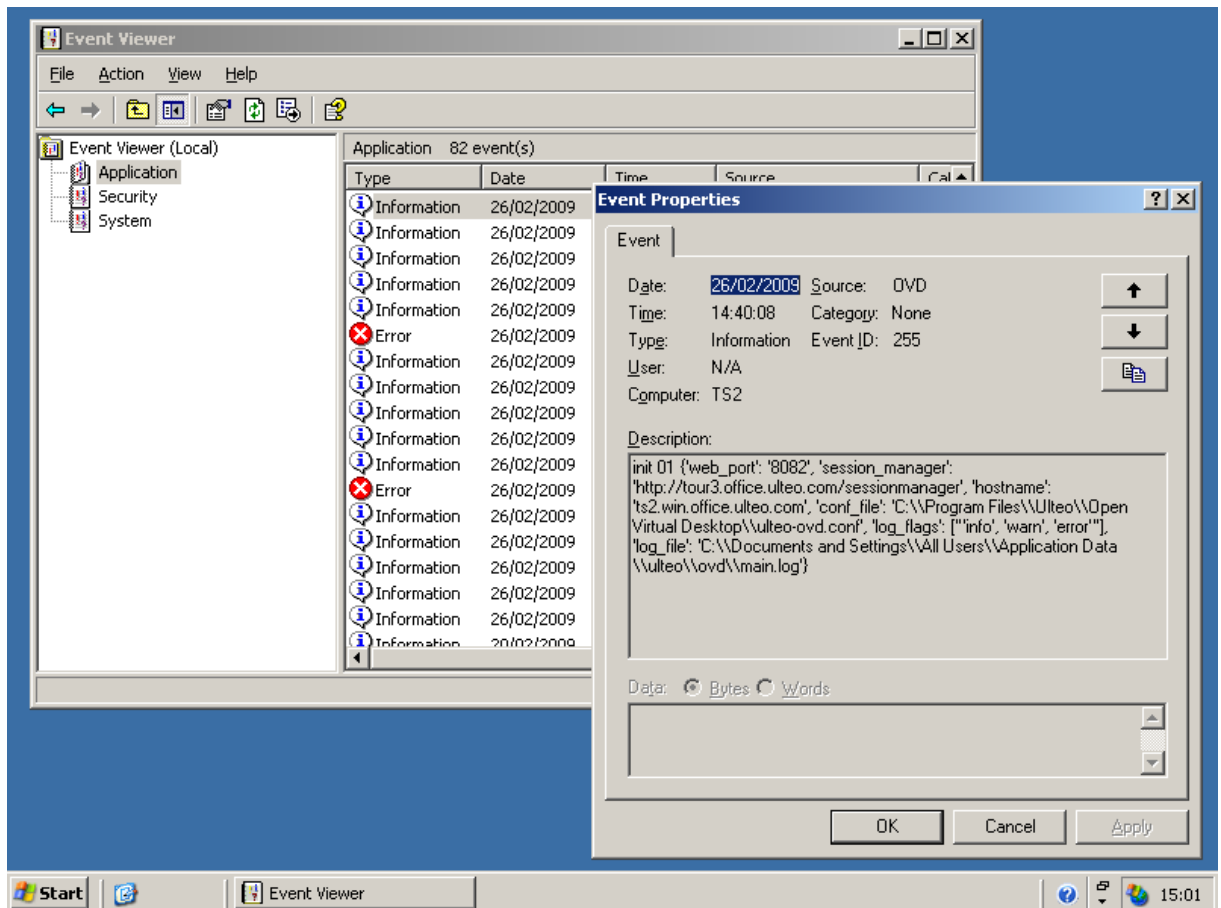


5 Internal System

5.1 Have a look at the Windows™ agent log

In a default Windows™ installation, the log file can be found at `C:\Documents and Settings\All Users\Application Data\Ulteo\ovd\main.log`.

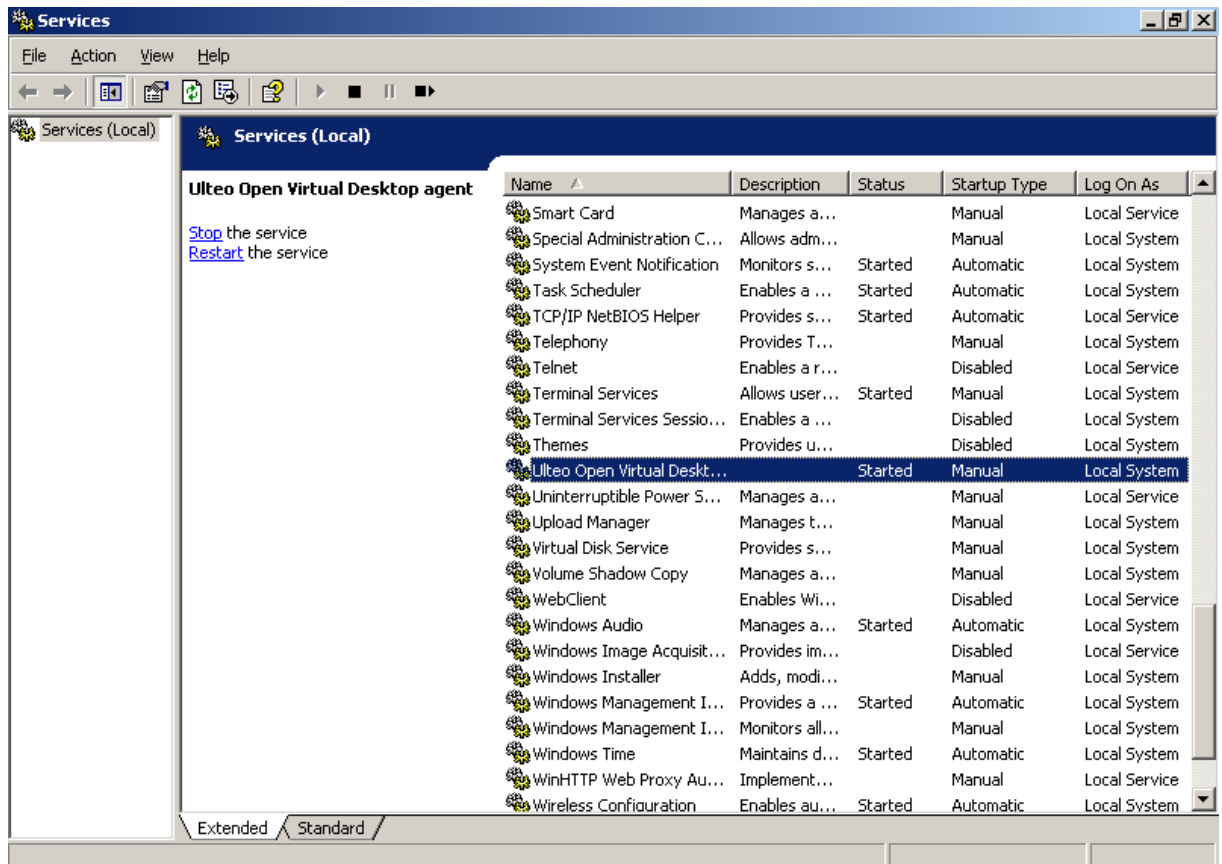
It's also possible to read some debug messages in the **Windows™ Event Viewer** (on the Application section).



5.2 Automatically start the service at boot

At the moment, the Windows™ service is not configured to be started automatically at boot.

To set it up, go to *Administrative Tools, Services* and find the *Ulteo Open Virtual Desktop* service.



Edit the *Properties* of services, set the **Startup** type to *Automatic*, and apply.

